



# GMT MONTHLY MEMBERSHIP PROGRESS REPORT

Results as of: 5/31/2018

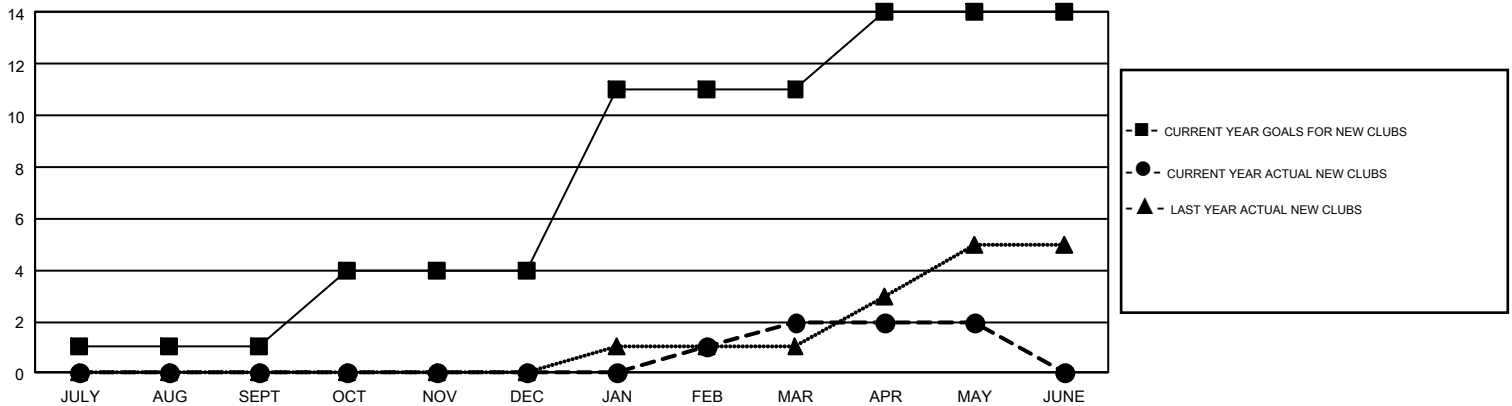
## GMT Constitutional Area 2, Group A

GMT: GORDON ZIEGLER

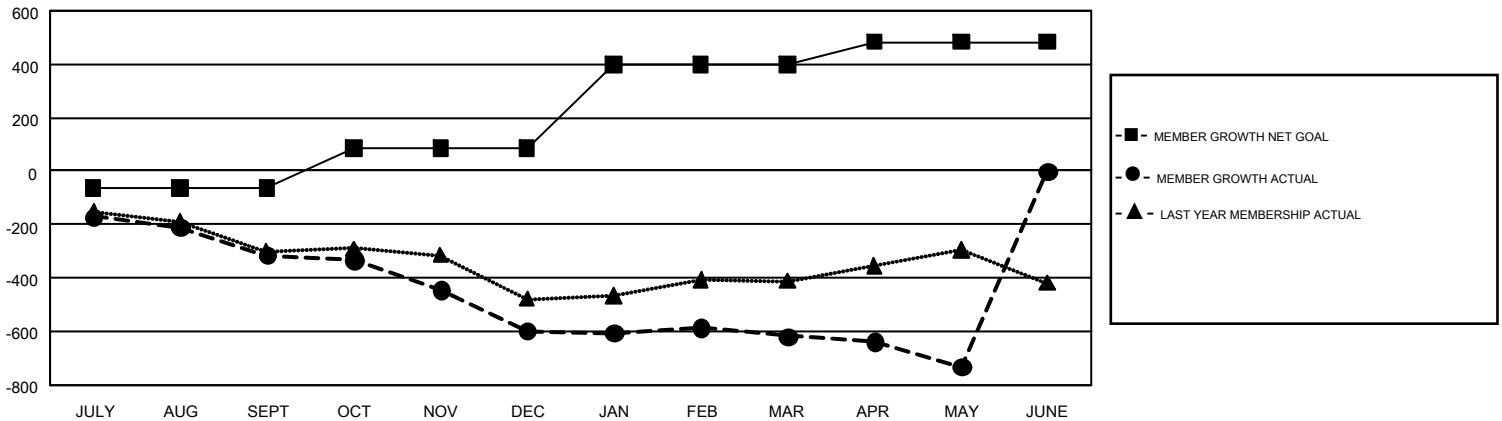
REPORT DOES NOT INCLUDE CLUBS IN UNDISTRICTED AREAS.

Clubs				Members			
RESULTS FOR 2017-2018				RESULTS FOR 2017-2018			
QUARTER	NEW CLUB GOAL	NEW CLUBS	DROPPED CLUBS	QUARTER	MEMBER GROWTH NET GOAL	MEMBER GROWTH ACTUAL	DROPPED MEMBERS ACTUAL (including transfers)
JULY/AUG/SEPT	1	0	5	JULY/AUG/SEPT	-65	306	566
OCT/NOV/DEC	3	0	3	OCT/NOV/DEC	152	417	643
JAN/FEB/MAR	7	2	4	JAN/FEB/MAR	311	488	452
APR/MAY/JUNE	3	0	2	APR/MAY/JUNE	86	263	353

GOALS AND ACTUAL NEW CLUBS CUMULATIVE



GOALS AND ACTUAL MEMBERS CUMULATIVE



DROPPED CLUBS: 14	400 CLUBS OF 699 ADDED 1 OR MORE NEW MEMBERS	<b>GENDER DISTRIBUTION</b> MALE 10,962 (67.55%) FEMALE 5,267 (32.45%)
<b>DROPPED MEMBERS</b> DECEASED 222 CLUB CANCELLED 74 OTHER 1,717 <b>TOTAL 2,013</b>	<a href="#">CLICK HERE FOR CUMULATIVE MEMBERSHIP DATA</a>	TOTAL FAMILY UNIT MEMBERS 3,035 FAMILY MEMBERS PAYING HALF DUES 1,541